

**DISTRICT COURT - CSRBA**  
**Fifth Judicial District**  
**County of Twin Falls - State of Idaho**

**JUN 10 2022**

By \_\_\_\_\_ Clerk  
 \_\_\_\_\_ Deputy Clerk

IN THE DISTRICT COURT OF THE FIFTH JUDICIAL DISTRICT OF THE  
 STATE OF IDAHO, IN AND FOR THE COUNTY OF TWIN FALLS

In Re CSRBA ) PARTIAL DECREE PURSUANT TO I.R.C.P. 54(b)  
 ) FOR FEDERAL RESERVED  
 Case No. 49576 )  
 ) WATER RIGHT NO. 94-09521A

NAME AND ADDRESS: UNITED STATES OF AMERICA ACTING THROUGH  
 USDA FOREST SERVICE  
 550 W FORT ST MSC 033  
 BOISE ID 83724

SOURCE: See Attachment 1, Column A TRIBUTARY: See Attachment 1, Column B

Sources are located on National Forest System Land in the Flat Creek-Middle North Fork Coeur d'Alene River subwatershed (HUC12 170103010401).

QUANTITY: The amount of water necessary to control and suppress forest fires.

PRIORITY DATE: 11/06/1906

POINT OF DIVERSION: See Attachment 1, Columns C through G

PURPOSE AND PERIOD OF USE: 

|                                 |                      |
|---------------------------------|----------------------|
| <u>PURPOSE OF USE</u>           | <u>PERIOD OF USE</u> |
| Administrative-Fire Suppression | 01/01 - 12/31        |

PLACE OF USE: National Forests in Idaho and the Kaniksu, Lolo and Kootenai National Forests in Montana.

See Attachment 2.

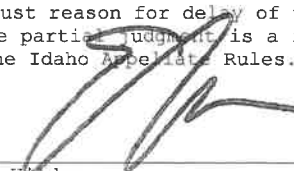
OTHER PROVISIONS NECESSARY FOR DEFINITION OR ADMINISTRATION OF THIS WATER RIGHT:

This right is limited to the intermittent diversion and use of water for the purpose of suppressing wildfires. This water right shall not be used as a basis to prevent the future appropriation of water.

This partial decree is subject to such general provisions necessary for the definition of the rights or for the efficient administration of the water rights as may be ultimately determined by the Court at a point in time no later than the entry of a final unified decree. Idaho Code § 42-1412(6).

RULE 54(b) CERTIFICATE

With respect to the issues determined by the above partial judgment it is hereby CERTIFIED, in accordance with Rule 54(b), I.R.C.P., that the court has determined that there is no just reason for delay of the entry of a final judgment and that the court has and does hereby direct that the above partial judgment is a final judgment upon which execution may issue and an appeal may be taken as provided by the Idaho Appellate Rules.

  
 \_\_\_\_\_  
 Eric J. Waldman  
 Presiding Judge of the  
 Coeur d'Alene-Spokane River Adjudication

Attachment 1






|    | A                              | B                              | C        | D     | E       | F    | G                      |
|----|--------------------------------|--------------------------------|----------|-------|---------|------|------------------------|
| 1  | SOURCE NAME                    | TO TRIBUTARY                   | TOWNSHIP | RANGE | SECTION | QQ   | SURVEY CODE AND NUMBER |
| 2  | Flat Creek                     | North Fork Coeur d'Alene River | 51N      | 02E   | 1       |      |                        |
| 3  | Unnamed Stream                 | Flat Creek                     | 51N      | 02E   | 1       |      |                        |
| 4  | Unnamed Stream                 | Flat Creek                     | 51N      | 02E   | 1       |      |                        |
| 5  | Unnamed Stream                 | Flat Creek                     | 51N      | 02E   | 1       |      |                        |
| 6  | Unnamed Stream                 | Flat Creek                     | 51N      | 02E   | 1       |      |                        |
| 7  | Unnamed Stream                 | Flat Creek                     | 51N      | 02E   | 1       |      |                        |
| 8  | Unnamed Stream                 | Flat Creek                     | 51N      | 02E   | 1       |      |                        |
| 9  | Unnamed Stream                 | Flat Creek                     | 51N      | 02E   | 1       |      |                        |
| 10 | Flat Creek                     | North Fork Coeur d'Alene River | 51N      | 02E   | 2       |      |                        |
| 11 | Unnamed Stream                 | Flat Creek                     | 51N      | 02E   | 2       |      |                        |
| 12 | Unnamed Stream                 | Flat Creek                     | 51N      | 02E   | 2       |      |                        |
| 13 | Unnamed Stream                 | Flat Creek                     | 51N      | 02E   | 2       |      |                        |
| 14 | Unnamed Stream                 | Flat Creek                     | 51N      | 02E   | 2       |      |                        |
| 15 | Unnamed Stream                 | Flat Creek                     | 51N      | 02E   | 2       |      |                        |
| 16 | Unnamed Stream                 | Flat Creek                     | 51N      | 02E   | 2       |      |                        |
| 17 | Unnamed Stream                 | Flat Creek                     | 51N      | 02E   | 2       |      |                        |
| 18 | Flat Creek                     | North Fork Coeur d'Alene River | 51N      | 02E   | 3       |      |                        |
| 19 | Unnamed Stream                 | Flat Creek                     | 51N      | 02E   | 3       |      |                        |
| 20 | Unnamed Stream                 | Flat Creek                     | 51N      | 02E   | 3       |      |                        |
| 21 | Unnamed Stream                 | Flat Creek                     | 51N      | 02E   | 3       |      |                        |
| 22 | Unnamed Stream                 | Flat Creek                     | 51N      | 02E   | 3       |      |                        |
| 23 | Unnamed Stream                 | Flat Creek                     | 51N      | 02E   | 3       |      |                        |
| 24 | Unnamed Stream                 | Flat Creek                     | 51N      | 02E   | 10      |      |                        |
| 25 | Unnamed Stream                 | Flat Creek                     | 51N      | 02E   | 10      |      |                        |
| 26 | Unnamed Stream                 | Flat Creek                     | 51N      | 02E   | 10      |      |                        |
| 27 | Unnamed Stream                 | Flat Creek                     | 51N      | 02E   | 11      |      |                        |
| 28 | Unnamed Stream                 | Flat Creek                     | 51N      | 02E   | 11      |      |                        |
| 29 | Unnamed Stream                 | Flat Creek                     | 51N      | 02E   | 11      |      |                        |
| 30 | Unnamed Stream                 | Flat Creek                     | 51N      | 02E   | 11      |      |                        |
| 31 | Unnamed Stream                 | Flat Creek                     | 51N      | 02E   | 11      |      |                        |
| 32 | Svee Creek                     | Flat Creek                     | 51N      | 02E   | 12      |      |                        |
| 33 | Unnamed Stream                 | Flat Creek                     | 51N      | 02E   | 12      |      |                        |
| 34 | Unnamed Stream                 | Flat Creek                     | 51N      | 02E   | 12      |      |                        |
| 35 | Unnamed Stream                 | Svee Creek                     | 51N      | 02E   | 12      |      |                        |
| 36 | Svee Creek                     | Flat Creek                     | 51N      | 02E   | 13      |      |                        |
| 37 | Unnamed Stream                 | Svee Creek                     | 51N      | 02E   | 13      |      |                        |
| 38 | Unnamed Stream                 | Svee Creek                     | 51N      | 02E   | 13      |      |                        |
| 39 | Unnamed Stream                 | Flat Creek                     | 51N      | 02E   | 14      |      |                        |
| 40 | Unnamed Stream                 | Flat Creek                     | 51N      | 02E   | 14      |      |                        |
| 41 | Unnamed Stream                 | North Fork Coeur d'Alene River | 51N      | 03E   | 3       | NWNE | L 2                    |
| 42 | North Fork Coeur d'Alene River | Coeur d'Alene River            | 51N      | 03E   | 3       | NWNW |                        |
| 43 | North Fork Coeur d'Alene River | Coeur d'Alene River            | 51N      | 03E   | 3       | NWNW | L 3                    |
| 44 | Unnamed Stream                 | North Fork Coeur d'Alene River | 51N      | 03E   | 3       | SWNE |                        |
| 45 | Flat Creek                     | North Fork Coeur d'Alene River | 51N      | 03E   | 4       | NENE | L 1                    |
| 46 | Unnamed Stream                 | North Fork Coeur d'Alene River | 51N      | 03E   | 4       | NENW | L 3                    |
| 47 | Flat Creek                     | North Fork Coeur d'Alene River | 51N      | 03E   | 4       | NESE |                        |
| 48 | Flat Creek                     | North Fork Coeur d'Alene River | 51N      | 03E   | 4       | NESW |                        |
| 49 | Unnamed Stream                 | North Fork Coeur d'Alene River | 51N      | 03E   | 4       | NWNE | L 2                    |
| 50 | Unnamed Stream                 | North Fork Coeur d'Alene River | 51N      | 03E   | 4       | NWNW | L 4                    |
| 51 | Flat Creek                     | North Fork Coeur d'Alene River | 51N      | 03E   | 4       | NWSE |                        |
| 52 | Flat Creek                     | North Fork Coeur d'Alene River | 51N      | 03E   | 4       | NWSW |                        |
| 53 | Unnamed Stream                 | North Fork Coeur d'Alene River | 51N      | 03E   | 4       | SESE |                        |
| 54 | Flat Creek                     | North Fork Coeur d'Alene River | 51N      | 03E   | 4       | SESW |                        |
| 55 | Unnamed Stream                 | Flat Creek                     | 51N      | 03E   | 4       | SESW |                        |
| 56 | Flat Creek                     | North Fork Coeur d'Alene River | 51N      | 03E   | 4       | SWSE |                        |
| 57 | Unnamed Stream                 | Flat Creek                     | 51N      | 03E   | 4       | SWSE |                        |
| 58 | Unnamed Stream                 | Flat Creek                     | 51N      | 03E   | 4       | SWSW |                        |
| 59 | Flat Creek                     | North Fork Coeur d'Alene River | 51N      | 03E   | 5       |      |                        |
| 60 | Unnamed Stream                 | Flat Creek                     | 51N      | 03E   | 5       |      |                        |
| 61 | Unnamed Stream                 | Flat Creek                     | 51N      | 03E   | 5       |      |                        |
| 62 | Unnamed Stream                 | North Fork Coeur d'Alene River | 51N      | 03E   | 5       |      |                        |
| 63 | Flat Creek                     | North Fork Coeur d'Alene River | 51N      | 03E   | 6       |      |                        |
| 64 | Svee Creek                     | Flat Creek                     | 51N      | 03E   | 6       |      |                        |
| 65 | Unnamed Stream                 | Flat Creek                     | 51N      | 03E   | 6       |      |                        |
| 66 | Unnamed Stream                 | Flat Creek                     | 51N      | 03E   | 6       |      |                        |
| 67 | Unnamed Stream                 | Flat Creek                     | 51N      | 03E   | 6       |      |                        |
| 68 | Unnamed Stream                 | Flat Creek                     | 51N      | 03E   | 6       |      |                        |
| 69 | Svee Creek                     | Flat Creek                     | 51N      | 03E   | 7       |      |                        |
| 70 | Unnamed Stream                 | Svee Creek                     | 51N      | 03E   | 7       |      |                        |
| 71 | Unnamed Stream                 | Svee Creek                     | 51N      | 03E   | 7       |      |                        |
| 72 | Unnamed Stream                 | Flat Creek                     | 51N      | 03E   | 8       |      |                        |
| 73 | Unnamed Stream                 | Flat Creek                     | 51N      | 03E   | 8       |      |                        |
| 74 | Unnamed Stream                 | Flat Creek                     | 51N      | 03E   | 8       |      |                        |
| 75 | Unnamed Stream                 | Svee Creek                     | 51N      | 03E   | 8       |      |                        |
| 76 | North Fork Coeur d'Alene River | Coeur d'Alene River            | 51N      | 03E   | 9       | NENE |                        |
| 77 | Unnamed Stream                 | North Fork Coeur d'Alene River | 51N      | 03E   | 9       | NENE |                        |
| 78 | Unnamed Stream                 | North Fork Coeur d'Alene River | 51N      | 03E   | 9       | NENE | L 1                    |
| 79 | Unnamed Stream                 | Flat Creek                     | 51N      | 03E   | 9       | NWNW |                        |
| 80 | Unnamed Stream                 | Flat Creek                     | 51N      | 03E   | 9       | NWSW |                        |
| 81 | Unnamed Stream                 | North Fork Coeur d'Alene River | 51N      | 03E   | 9       | SESE |                        |
| 82 | Unnamed Stream                 | North Fork Coeur d'Alene River | 51N      | 03E   | 9       | SESE |                        |
| 83 | Unnamed Stream                 | North Fork Coeur d'Alene River | 51N      | 03E   | 9       | SWSE |                        |
| 84 | Unnamed Stream                 | Flat Creek                     | 51N      | 03E   | 9       | SWSW |                        |

|     | A                              | B                              | C        | D     | E       | F    | G                      |
|-----|--------------------------------|--------------------------------|----------|-------|---------|------|------------------------|
| 1   | SOURCE NAME                    | TO TRIBUTARY                   | TOWNSHIP | RANGE | SECTION | QQ   | SURVEY CODE AND NUMBER |
| 85  | North Fork Coeur d'Alene River | Coeur d'Alene River            | 51N      | 03E   | 10      | NWNW |                        |
| 86  | North Fork Coeur d'Alene River | Coeur d'Alene River            | 51N      | 03E   | 10      | NWNW | L 2                    |
| 87  | North Fork Coeur d'Alene River | Coeur d'Alene River            | 51N      | 03E   | 10      | NWNW | L 3                    |
| 88  | North Fork Coeur d'Alene River | Coeur d'Alene River            | 51N      | 03E   | 10      | NWSW |                        |
| 89  | North Fork Coeur d'Alene River | Coeur d'Alene River            | 51N      | 03E   | 10      | NWSW | L 4                    |
| 90  | Unnamed Stream                 | North Fork Coeur d'Alene River | 51N      | 03E   | 16      |      |                        |
| 91  | Unnamed Stream                 | Brett Creek                    | 52N      | 02E   | 11      |      |                        |
| 92  | Davy Creek                     | Senator Creek                  | 52N      | 02E   | 12      |      |                        |
| 93  | Senator Creek                  | North Fork Coeur d'Alene River | 52N      | 02E   | 12      |      |                        |
| 94  | Unnamed Stream                 | Brett Creek                    | 52N      | 02E   | 12      |      |                        |
| 95  | Unnamed Stream                 | Brett Creek                    | 52N      | 02E   | 12      |      |                        |
| 96  | Unnamed Stream                 | Brett Creek                    | 52N      | 02E   | 12      |      |                        |
| 97  | Unnamed Stream                 | Senator Creek                  | 52N      | 02E   | 12      |      |                        |
| 98  | Unnamed Stream                 | Senator Creek                  | 52N      | 02E   | 12      |      |                        |
| 99  | Unnamed Stream                 | Brett Creek                    | 52N      | 02E   | 13      |      |                        |
| 100 | Unnamed Stream                 | Brett Creek                    | 52N      | 02E   | 13      |      |                        |
| 101 | Unnamed Stream                 | Brett Creek                    | 52N      | 02E   | 13      |      |                        |
| 102 | Unnamed Stream                 | Brett Creek                    | 52N      | 02E   | 13      |      |                        |
| 103 | Unnamed Stream                 | Brett Creek                    | 52N      | 02E   | 13      |      |                        |
| 104 | Unnamed Stream                 | Brett Creek                    | 52N      | 02E   | 14      |      |                        |
| 105 | Unnamed Stream                 | Brett Creek                    | 52N      | 02E   | 14      |      |                        |
| 106 | Unnamed Stream                 | Brett Creek                    | 52N      | 02E   | 14      |      |                        |
| 107 | Unnamed Stream                 | Brett Creek                    | 52N      | 02E   | 14      |      |                        |
| 108 | Brett Creek                    | North Fork Coeur d'Alene River | 52N      | 02E   | 22      |      |                        |
| 109 | Unnamed Stream                 | Brett Creek                    | 52N      | 02E   | 22      |      |                        |
| 110 | Unnamed Stream                 | Brett Creek                    | 52N      | 02E   | 22      |      |                        |
| 111 | Brett Creek                    | North Fork Coeur d'Alene River | 52N      | 02E   | 23      |      |                        |
| 112 | Unnamed Stream                 | Brett Creek                    | 52N      | 02E   | 23      |      |                        |
| 113 | Unnamed Stream                 | Brett Creek                    | 52N      | 02E   | 23      |      |                        |
| 114 | Unnamed Stream                 | Brett Creek                    | 52N      | 02E   | 23      |      |                        |
| 115 | Unnamed Stream                 | Brett Creek                    | 52N      | 02E   | 23      |      |                        |
| 116 | Unnamed Stream                 | Brett Creek                    | 52N      | 02E   | 23      |      |                        |
| 117 | Unnamed Stream                 | Brett Creek                    | 52N      | 02E   | 23      |      |                        |
| 118 | Unnamed Stream                 | Brett Creek                    | 52N      | 02E   | 23      |      |                        |
| 119 | Brett Creek                    | North Fork Coeur d'Alene River | 52N      | 02E   | 24      |      |                        |
| 120 | Unnamed Stream                 | Brett Creek                    | 52N      | 02E   | 24      |      |                        |
| 121 | Unnamed Stream                 | Brett Creek                    | 52N      | 02E   | 24      |      |                        |
| 122 | Unnamed Stream                 | Brett Creek                    | 52N      | 02E   | 24      |      |                        |
| 123 | Unnamed Stream                 | Brett Creek                    | 52N      | 02E   | 24      |      |                        |
| 124 | Unnamed Stream                 | Brett Creek                    | 52N      | 02E   | 24      |      |                        |
| 125 | Unnamed Stream                 | Brett Creek                    | 52N      | 02E   | 24      |      |                        |
| 126 | Unnamed Stream                 | Miners Creek                   | 52N      | 02E   | 24      |      |                        |
| 127 | Miners Creek                   | North Fork Coeur d'Alene River | 52N      | 02E   | 25      |      |                        |
| 128 | Unnamed Stream                 | Miners Creek                   | 52N      | 02E   | 25      |      |                        |
| 129 | Unnamed Stream                 | Miners Creek                   | 52N      | 02E   | 25      |      |                        |
| 130 | Unnamed Stream                 | Miners Creek                   | 52N      | 02E   | 25      |      |                        |
| 131 | Unnamed Stream                 | Miners Creek                   | 52N      | 02E   | 25      |      |                        |
| 132 | Unnamed Stream                 | Miners Creek                   | 52N      | 02E   | 25      |      |                        |
| 133 | Unnamed Stream                 | Miners Creek                   | 52N      | 02E   | 25      |      |                        |
| 134 | Miners Creek                   | North Fork Coeur d'Alene River | 52N      | 02E   | 26      |      |                        |
| 135 | Unnamed Stream                 | Miners Creek                   | 52N      | 02E   | 26      |      |                        |
| 136 | Unnamed Stream                 | Miners Creek                   | 52N      | 02E   | 26      |      |                        |
| 137 | Unnamed Stream                 | Miners Creek                   | 52N      | 02E   | 26      |      |                        |
| 138 | Unnamed Stream                 | Miners Creek                   | 52N      | 02E   | 26      |      |                        |
| 139 | Unnamed Stream                 | Miners Creek                   | 52N      | 02E   | 26      |      |                        |
| 140 | Miners Creek                   | North Fork Coeur d'Alene River | 52N      | 02E   | 27      |      |                        |
| 141 | Unnamed Stream                 | Miners Creek                   | 52N      | 02E   | 27      |      |                        |
| 142 | Unnamed Stream                 | Miners Creek                   | 52N      | 02E   | 27      |      |                        |
| 143 | Flat Creek                     | North Fork Coeur d'Alene River | 52N      | 02E   | 33      |      |                        |
| 144 | Flat Creek                     | North Fork Coeur d'Alene River | 52N      | 02E   | 34      |      |                        |
| 145 | Unnamed Stream                 | Flat Creek                     | 52N      | 02E   | 34      |      |                        |
| 146 | Unnamed Stream                 | Miners Creek                   | 52N      | 02E   | 34      |      |                        |
| 147 | Unnamed Stream                 | Flat Creek                     | 52N      | 02E   | 35      |      |                        |
| 148 | Unnamed Stream                 | Flat Creek                     | 52N      | 02E   | 35      |      |                        |
| 149 | Unnamed Stream                 | Flat Creek                     | 52N      | 02E   | 35      |      |                        |
| 150 | Unnamed Stream                 | Flat Creek                     | 52N      | 02E   | 35      |      |                        |
| 151 | Unnamed Stream                 | Miners Creek                   | 52N      | 02E   | 35      |      |                        |
| 152 | Unnamed Stream                 | Miners Creek                   | 52N      | 02E   | 35      |      |                        |
| 153 | Unnamed Stream                 | Flat Creek                     | 52N      | 02E   | 36      |      |                        |
| 154 | Unnamed Stream                 | Miners Creek                   | 52N      | 02E   | 36      |      |                        |
| 155 | Unnamed Stream                 | Miners Creek                   | 52N      | 02E   | 36      |      |                        |
| 156 | Unnamed Stream                 | Cinnamon Creek                 | 52N      | 03E   | 3       |      |                        |
| 157 | Unnamed Stream                 | Cinnamon Creek                 | 52N      | 03E   | 3       |      |                        |
| 158 | Unnamed Stream                 | Cinnamon Creek                 | 52N      | 03E   | 3       |      |                        |
| 159 | Cinnamon Creek                 | North Fork Coeur d'Alene River | 52N      | 03E   | 4       |      |                        |
| 160 | Unnamed Stream                 | Cinnamon Creek                 | 52N      | 03E   | 4       |      |                        |
| 161 | Unnamed Stream                 | Cinnamon Creek                 | 52N      | 03E   | 4       |      |                        |
| 162 | Unnamed Stream                 | Cinnamon Creek                 | 52N      | 03E   | 4       |      |                        |
| 163 | Unnamed Stream                 | Cinnamon Creek                 | 52N      | 03E   | 4       |      |                        |
| 164 | Unnamed Stream                 | Cinnamon Creek                 | 52N      | 03E   | 4       |      |                        |
| 165 | Unnamed Stream                 | Cinnamon Creek                 | 52N      | 03E   | 4       |      |                        |
| 166 | Spion Kop Creek                | North Fork Coeur d'Alene River | 52N      | 03E   | 5       |      |                        |
| 167 | Unnamed Stream                 | North Fork Coeur d'Alene River | 52N      | 03E   | 5       |      |                        |

|     | A                              | B                              | C        | D     | E       | F  | G                      |
|-----|--------------------------------|--------------------------------|----------|-------|---------|----|------------------------|
| 1   | SOURCE NAME                    | TO TRIBUTARY                   | TOWNSHIP | RANGE | SECTION | QQ | SURVEY CODE AND NUMBER |
| 168 | Unnamed Stream                 | North Fork Coeur d'Alene River | 52N      | 03E   | 5       |    |                        |
| 169 | North Fork Coeur d'Alene River | Coeur d'Alene River            | 52N      | 03E   | 6       |    |                        |
| 170 | Senator Creek                  | North Fork Coeur d'Alene River | 52N      | 03E   | 6       |    |                        |
| 171 | Chute Creek                    | Senator Creek                  | 52N      | 03E   | 7       |    |                        |
| 172 | Davy Creek                     | Senator Creek                  | 52N      | 03E   | 7       |    |                        |
| 173 | Lion Creek                     | North Fork Coeur d'Alene River | 52N      | 03E   | 7       |    |                        |
| 174 | North Fork Coeur d'Alene River | Coeur d'Alene River            | 52N      | 03E   | 7       |    |                        |
| 175 | President Creek                | North Fork Coeur d'Alene River | 52N      | 03E   | 7       |    |                        |
| 176 | Senator Creek                  | North Fork Coeur d'Alene River | 52N      | 03E   | 7       |    |                        |
| 177 | Unnamed Stream                 | North Fork Coeur d'Alene River | 52N      | 03E   | 7       |    |                        |
| 178 | Cinnamon Creek                 | North Fork Coeur d'Alene River | 52N      | 03E   | 8       |    |                        |
| 179 | Lion Creek                     | North Fork Coeur d'Alene River | 52N      | 03E   | 8       |    |                        |
| 180 | North Fork Coeur d'Alene River | Coeur d'Alene River            | 52N      | 03E   | 8       |    |                        |
| 181 | Spion Kop Creek                | North Fork Coeur d'Alene River | 52N      | 03E   | 8       |    |                        |
| 182 | Stony Creek                    | North Fork Coeur d'Alene River | 52N      | 03E   | 8       |    |                        |
| 183 | Unnamed Stream                 | Cinnamon Creek                 | 52N      | 03E   | 8       |    |                        |
| 184 | Unnamed Stream                 | Cinnamon Creek                 | 52N      | 03E   | 8       |    |                        |
| 185 | Unnamed Stream                 | North Fork Coeur d'Alene River | 52N      | 03E   | 8       |    |                        |
| 186 | Unnamed Stream                 | North Fork Coeur d'Alene River | 52N      | 03E   | 8       |    |                        |
| 187 | Unnamed Stream                 | North Fork Coeur d'Alene River | 52N      | 03E   | 8       |    |                        |
| 188 | Unnamed Stream                 | North Fork Coeur d'Alene River | 52N      | 03E   | 8       |    |                        |
| 189 | Unnamed Stream                 | North Fork Coeur d'Alene River | 52N      | 03E   | 8       |    |                        |
| 190 | Unnamed Stream                 | North Fork Coeur d'Alene River | 52N      | 03E   | 8       |    |                        |
| 191 | Cinnamon Creek                 | North Fork Coeur d'Alene River | 52N      | 03E   | 9       |    |                        |
| 192 | Stony Creek                    | North Fork Coeur d'Alene River | 52N      | 03E   | 9       |    |                        |
| 193 | Unnamed Stream                 | Cinnamon Creek                 | 52N      | 03E   | 9       |    |                        |
| 194 | Unnamed Stream                 | Cinnamon Creek                 | 52N      | 03E   | 9       |    |                        |
| 195 | Unnamed Stream                 | Cinnamon Creek                 | 52N      | 03E   | 10      |    |                        |
| 196 | Unnamed Stream                 | Cinnamon Creek                 | 52N      | 03E   | 10      |    |                        |
| 197 | Gold Creek                     | North Fork Coeur d'Alene River | 52N      | 03E   | 15      |    |                        |
| 198 | Unnamed Stream                 | Gold Creek                     | 52N      | 03E   | 15      |    |                        |
| 199 | Swift Creek                    | North Fork Coeur d'Alene River | 52N      | 03E   | 16      |    |                        |
| 200 | Taft Creek                     | North Fork Coeur d'Alene River | 52N      | 03E   | 16      |    |                        |
| 201 | Unnamed Stream                 | Taft Creek                     | 52N      | 03E   | 16      |    |                        |
| 202 | Wilson Creek                   | North Fork Coeur d'Alene River | 52N      | 03E   | 16      |    |                        |
| 203 | North Fork Coeur d'Alene River | Coeur d'Alene River            | 52N      | 03E   | 17      |    |                        |
| 204 | President Creek                | North Fork Coeur d'Alene River | 52N      | 03E   | 17      |    |                        |
| 205 | Stony Creek                    | North Fork Coeur d'Alene River | 52N      | 03E   | 17      |    |                        |
| 206 | Swift Creek                    | North Fork Coeur d'Alene River | 52N      | 03E   | 17      |    |                        |
| 207 | Taft Creek                     | North Fork Coeur d'Alene River | 52N      | 03E   | 17      |    |                        |
| 208 | Unnamed Stream                 | President Creek                | 52N      | 03E   | 17      |    |                        |
| 209 | President Creek                | North Fork Coeur d'Alene River | 52N      | 03E   | 18      |    |                        |
| 210 | Unnamed Stream                 | Brett Creek                    | 52N      | 03E   | 18      |    |                        |
| 211 | Brett Creek                    | North Fork Coeur d'Alene River | 52N      | 03E   | 19      |    |                        |
| 212 | North Fork Coeur d'Alene River | Coeur d'Alene River            | 52N      | 03E   | 19      |    |                        |
| 213 | Nowhere Creek                  | North Fork Coeur d'Alene River | 52N      | 03E   | 19      |    |                        |
| 214 | Unnamed Stream                 | Brett Creek                    | 52N      | 03E   | 19      |    |                        |
| 215 | Unnamed Stream                 | Brett Creek                    | 52N      | 03E   | 19      |    |                        |
| 216 | Unnamed Stream                 | Miners Creek                   | 52N      | 03E   | 19      |    |                        |
| 217 | Debbs Creek                    | North Fork Coeur d'Alene River | 52N      | 03E   | 20      |    |                        |
| 218 | Gold Creek                     | North Fork Coeur d'Alene River | 52N      | 03E   | 20      |    |                        |
| 219 | North Fork Coeur d'Alene River | Coeur d'Alene River            | 52N      | 03E   | 20      |    |                        |
| 220 | Wilson Creek                   | North Fork Coeur d'Alene River | 52N      | 03E   | 20      |    |                        |
| 221 | Big Hank Creek                 | North Fork Coeur d'Alene River | 52N      | 03E   | 21      |    |                        |
| 222 | Debbs Creek                    | North Fork Coeur d'Alene River | 52N      | 03E   | 21      |    |                        |
| 223 | Gold Creek                     | North Fork Coeur d'Alene River | 52N      | 03E   | 21      |    |                        |
| 224 | Wilson Creek                   | North Fork Coeur d'Alene River | 52N      | 03E   | 21      |    |                        |
| 225 | Big Hank Creek                 | North Fork Coeur d'Alene River | 52N      | 03E   | 22      |    |                        |
| 226 | Debbs Creek                    | North Fork Coeur d'Alene River | 52N      | 03E   | 22      |    |                        |
| 227 | Gold Creek                     | North Fork Coeur d'Alene River | 52N      | 03E   | 22      |    |                        |
| 228 | Unnamed Stream                 | Big Hank Creek                 | 52N      | 03E   | 22      |    |                        |
| 229 | Unnamed Stream                 | Gold Creek                     | 52N      | 03E   | 22      |    |                        |
| 230 | Unnamed Stream                 | Big Hank Creek                 | 52N      | 03E   | 23      |    |                        |
| 231 | Little Canyon Creek            | North Fork Coeur d'Alene River | 52N      | 03E   | 26      |    |                        |
| 232 | Unnamed Stream                 | Little Canyon Creek            | 52N      | 03E   | 26      |    |                        |
| 233 | Unnamed Stream                 | Little Canyon Creek            | 52N      | 03E   | 26      |    |                        |
| 234 | Little Canyon Creek            | North Fork Coeur d'Alene River | 52N      | 03E   | 27      |    |                        |
| 235 | Unnamed Stream                 | Big Hank Creek                 | 52N      | 03E   | 27      |    |                        |
| 236 | Unnamed Stream                 | Little Canyon Creek            | 52N      | 03E   | 27      |    |                        |
| 237 | Unnamed Stream                 | Little Canyon Creek            | 52N      | 03E   | 27      |    |                        |
| 238 | Big Hank Creek                 | North Fork Coeur d'Alene River | 52N      | 03E   | 28      |    |                        |
| 239 | North Fork Coeur d'Alene River | Coeur d'Alene River            | 52N      | 03E   | 28      |    |                        |
| 240 | Unnamed Stream                 | Big Hank Creek                 | 52N      | 03E   | 28      |    |                        |
| 241 | Unnamed Stream                 | North Fork Coeur d'Alene River | 52N      | 03E   | 28      |    |                        |
| 242 | Bennett Creek                  | North Fork Coeur d'Alene River | 52N      | 03E   | 29      |    |                        |
| 243 | Big Hank Creek                 | North Fork Coeur d'Alene River | 52N      | 03E   | 29      |    |                        |
| 244 | Debbs Creek                    | North Fork Coeur d'Alene River | 52N      | 03E   | 29      |    |                        |
| 245 | Miners Creek                   | North Fork Coeur d'Alene River | 52N      | 03E   | 29      |    |                        |
| 246 | North Fork Coeur d'Alene River | Coeur d'Alene River            | 52N      | 03E   | 29      |    |                        |
| 247 | Miners Creek                   | North Fork Coeur d'Alene River | 52N      | 03E   | 30      |    |                        |
| 248 | Unnamed Stream                 | Miners Creek                   | 52N      | 03E   | 30      |    |                        |
| 249 | Unnamed Stream                 | Miners Creek                   | 52N      | 03E   | 30      |    |                        |
| 250 | Unnamed Stream                 | Miners Creek                   | 52N      | 03E   | 30      |    |                        |

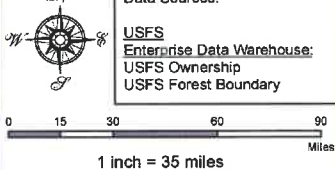
| 1   | A                              | B                              | C        | D     | E       | F  | G                      |
|-----|--------------------------------|--------------------------------|----------|-------|---------|----|------------------------|
|     | SOURCE NAME                    | TO TRIBUTARY                   | TOWNSHIP | RANGE | SECTION | QQ | SURVEY CODE AND NUMBER |
| 251 | Unnamed Stream                 | Miners Creek                   | 52N      | 03E   | 30      |    |                        |
| 252 | Bennett Creek                  | North Fork Coeur d'Alene River | 52N      | 03E   | 31      |    |                        |
| 253 | Unnamed Stream                 | Flat Creek                     | 52N      | 03E   | 31      |    |                        |
| 254 | Unnamed Stream                 | Flat Creek                     | 52N      | 03E   | 31      |    |                        |
| 255 | Bennett Creek                  | North Fork Coeur d'Alene River | 52N      | 03E   | 32      |    |                        |
| 256 | Unnamed Stream                 | Cardinal Creek                 | 52N      | 03E   | 32      |    |                        |
| 257 | Unnamed Stream                 | Flat Creek                     | 52N      | 03E   | 32      |    |                        |
| 258 | Unnamed Stream                 | North Fork Coeur d'Alene River | 52N      | 03E   | 32      |    |                        |
| 259 | Cardinal Creek                 | North Fork Coeur d'Alene River | 52N      | 03E   | 33      |    |                        |
| 260 | Emery Creek                    | North Fork Coeur d'Alene River | 52N      | 03E   | 33      |    |                        |
| 261 | North Fork Coeur d'Alene River | Coeur d'Alene River            | 52N      | 03E   | 33      |    |                        |
| 262 | Unnamed Stream                 | North Fork Coeur d'Alene River | 52N      | 03E   | 33      |    |                        |
| 263 | Unnamed Stream                 | North Fork Coeur d'Alene River | 52N      | 03E   | 33      |    |                        |
| 264 | Emery Creek                    | North Fork Coeur d'Alene River | 52N      | 03E   | 34      |    |                        |
| 265 | Little Canyon Creek            | North Fork Coeur d'Alene River | 52N      | 03E   | 34      |    |                        |
| 266 | North Fork Coeur d'Alene River | Coeur d'Alene River            | 52N      | 03E   | 34      |    |                        |
| 267 | Unnamed Stream                 | Little Canyon Creek            | 52N      | 03E   | 34      |    |                        |
| 268 | Unnamed Stream                 | Little Canyon Creek            | 52N      | 03E   | 34      |    |                        |
| 269 | Unnamed Stream                 | Little Canyon Creek            | 52N      | 03E   | 34      |    |                        |
| 270 | Unnamed Stream                 | Little Canyon Creek            | 52N      | 03E   | 34      |    |                        |
| 271 | Unnamed Stream                 | Little Canyon Creek            | 52N      | 03E   | 35      |    |                        |
| 272 | Unnamed Stream                 | Little Canyon Creek            | 52N      | 03E   | 35      |    |                        |
| 273 | Spion Kop Creek                | North Fork Coeur d'Alene River | 53N      | 03E   | 32      |    |                        |
| 274 | Cinnamon Creek                 | North Fork Coeur d'Alene River | 53N      | 03E   | 33      |    |                        |
| 275 | Spion Kop Creek                | North Fork Coeur d'Alene River | 53N      | 03E   | 33      |    |                        |
| 276 | Unnamed Stream                 | Cinnamon Creek                 | 53N      | 03E   | 33      |    |                        |
| 277 | Unnamed Stream                 | Cinnamon Creek                 | 53N      | 03E   | 33      |    |                        |
| 278 | Unnamed Stream                 | Cinnamon Creek                 | 53N      | 03E   | 33      |    |                        |
| 279 | Unnamed Stream                 | Cinnamon Creek                 | 53N      | 03E   | 33      |    |                        |
| 280 | Unnamed Stream                 | Cinnamon Creek                 | 53N      | 03E   | 34      |    |                        |
| 281 | Unnamed Stream                 | Cinnamon Creek                 | 53N      | 03E   | 34      |    |                        |
| 282 | Unnamed Stream                 | Cinnamon Creek                 | 53N      | 03E   | 34      |    |                        |
| 283 | Unnamed Pond                   | Sink                           | 52N      | 03E   | 8       |    |                        |

Attachment 2  
 Place of Use Map Fire Suppression - Water Right No. 94-09521A  
 National Forests in Idaho and the Kaniksu, Lolo and Kootenai NF in Montana

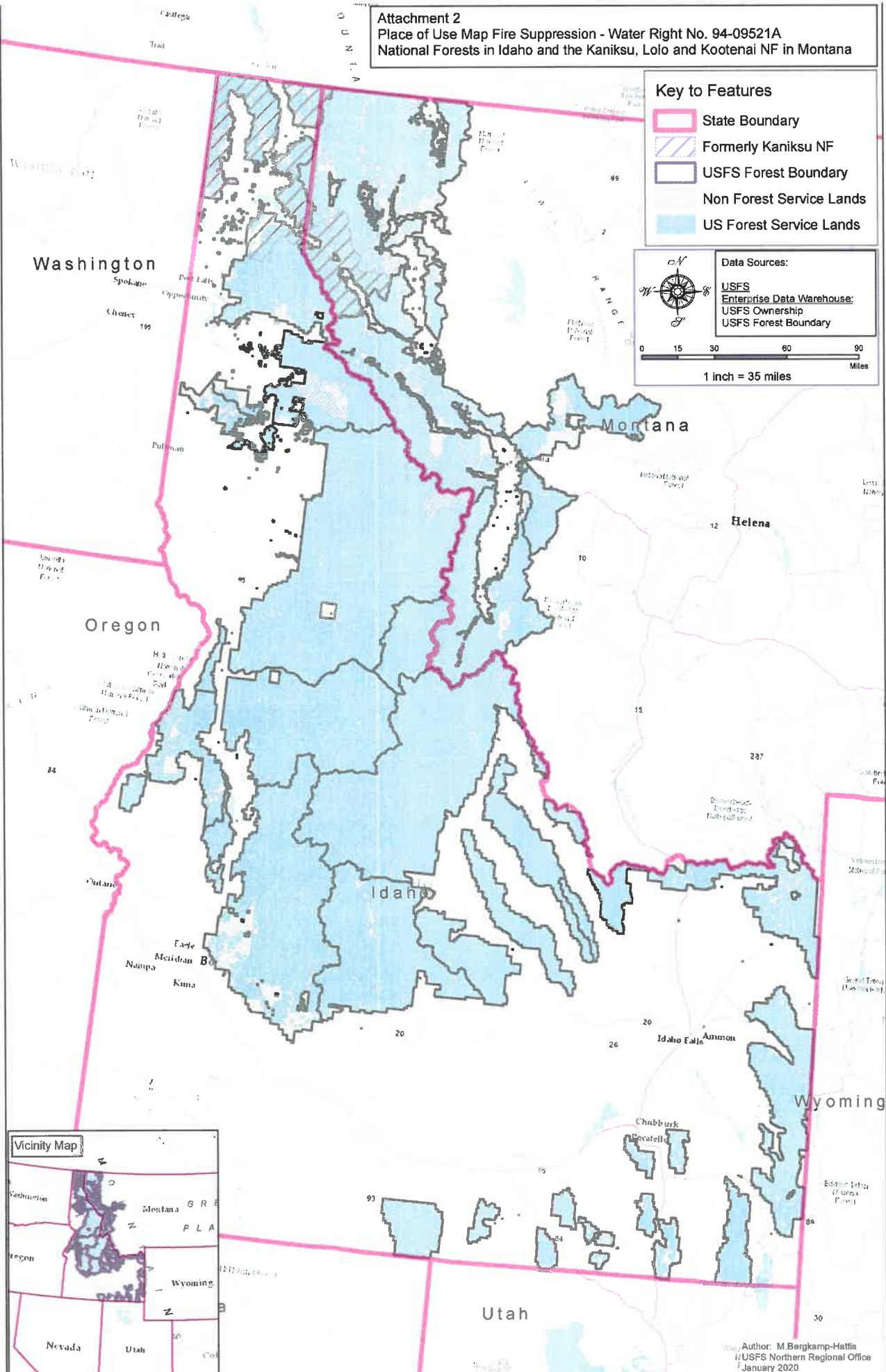
- Key to Features**
-  State Boundary
  -  Formerly Kaniksu NF
  -  USFS Forest Boundary
  -  Non Forest Service Lands
  -  US Forest Service Lands

**Data Sources:**

- USFS
- Enterprise Data Warehouse
- USFS Ownership
- USFS Forest Boundary



0 15 30 60 90  
Miles  
1 inch = 35 miles



Author: M. Bergkamp-Hattis  
 USFS Northern Regional Office  
 January 2020